



## What does a collision leave in its wake?

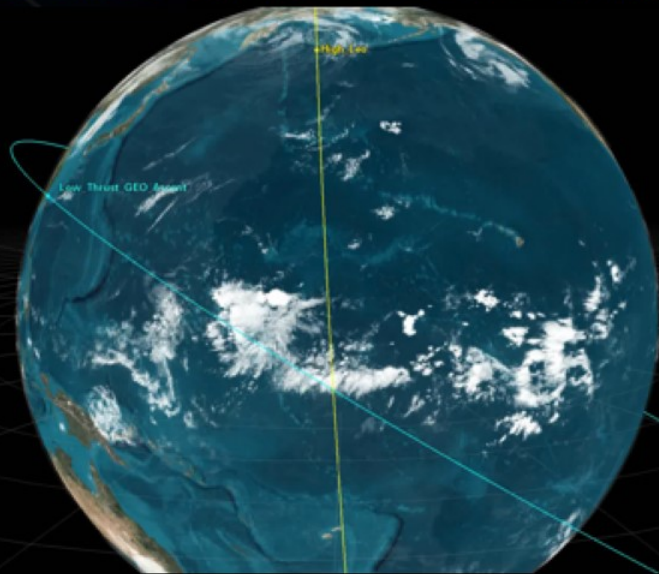
(Note: This is orbit regime-agnostic – the same principles apply)

# Can't afford a single collision in any orbit regime!

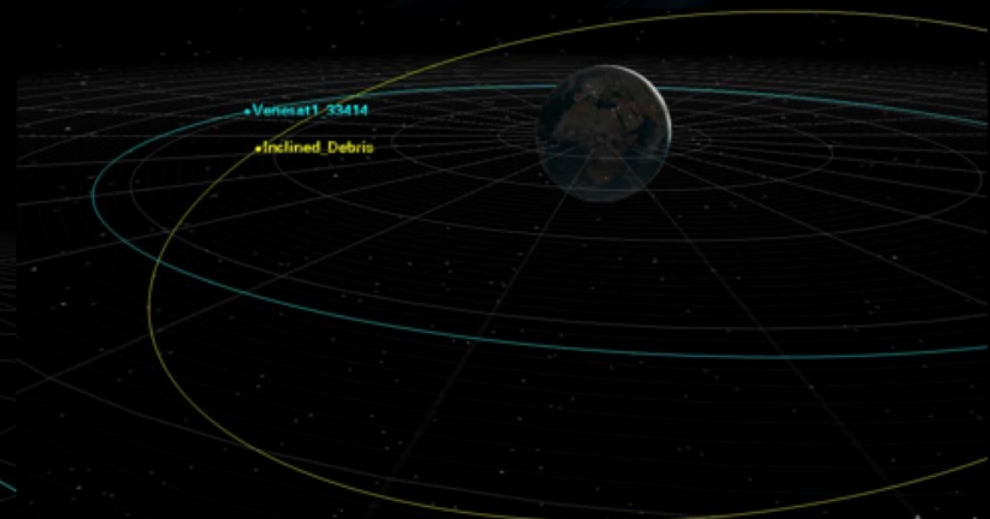
- Consider two hypothetical collision cases

Debris from any collisions above 800 km will remain for hundreds of years

Collision of low-thrust ascent GTO w/high LEO



GEO Collision (15° planar separation)

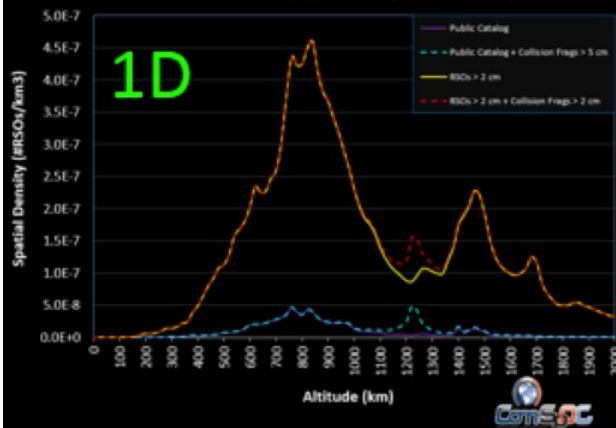


0/00:03:00.000



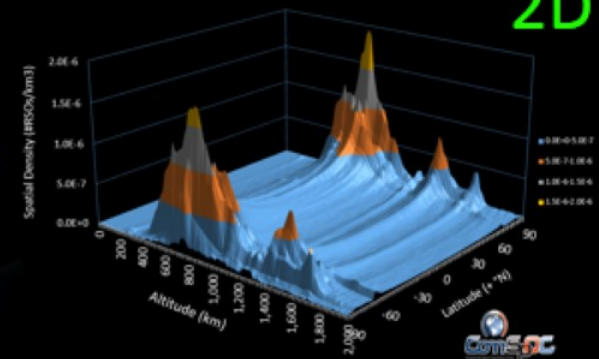
# 1D, 2D and 3D Spatial Density Depictions

Pre- and Post-Collision (Hypothetical) Spatial Density vs Altitude



- Post-collision debris somewhat visible in 1D portrayal; dramatic congestion in 2D & even more in 3D

Spatial Density of All Estimated RSOs > 2 cm



Spatial Density of All Estimated RSOs + Collision Fragments > 2 cm

